



University of  
**Salford**  
MANCHESTER

School of  
Computing, Science  
& Engineering

# Safety Information For New Students





# SAFETY LEGISLATION

The University operates under the same Health & Safety legislation as any place of work

- Health & Safety at Work Act
- Control of Substances Hazardous to Health
- Electricity at Work Act

Students are expected to be aware of safety issues and ensure you minimise any danger to yourself and others.



# BASIC SAFETY CONSIDERATIONS

- **DO NOT** ignore alarms
- Observe safety signs and act on them.
- If in doubt, **ASK A MEMBER OF STAFF**

## READ DOCUMENTS

There may be additional safety information in your

- Programme Handbook
- Laboratory Handouts



# FIRE

## ON HEARING CONTINUOUS FIRE SIREN

- You must immediately leave the building by the fire routes. **DO NOT USE LIFTS**
- Assemble in Peel car park away from building.
- Don't reenter building until instructed to do so by a fire warden.

## IF YOU SEE A FIRE IN A UNIVERSITY BUILDING

- Sound the fire alarm by hitting a red fire switch
- Leave the building by the nearest exit.  
**DO NOT USE LIFTS**
- Go around to entrance and report fire to the fire team

# SAFETY SIGNS

THERE ARE FOUR TYPES OF SAFETY SIGN YOU SHOULD BE AWARE OF:



**BLUE:** Mandatory Actions

**RED:** Prohibitory Notices

**YELLOW:** Warning Notices

**GREEN:** Safe Conditions



# SAFETY SIGNS

BLUE: Mandatory Actions





# SAFETY SIGNS

RED: Prohibitory Notices



No admittance  
Authorised  
personnel only



Do not  
drink



# SAFETY SIGNS

YELLOW: Warning Notices



**DANGER**  
High voltage



**DANGER**  
Laser hazard





# SAFETY SIGNS

GREEN: Safe Conditions





# FIRST AID

## BE AWARE OF THE TWO EASIEST WAYS TO GET FIRST AID TREATMENT

- Go to the School Office  
(First Floor Newton Building)
- Phone: Internal **53333**  
External **0161 2953333**
- After any accident or near miss please report the incident to Health, Safety and Wellbeing using the online form on the website.

Put it in you mobile as **UNIVERSITY EMERGENCY NUMBER**



# **SAFETY STUFF**

**University Health, Safety and Wellbeing unit:**

Crescent House

**College Health and Safety Co-ordinator:**

David Lamb: D.C.Lamb@salford.ac.uk

**Health & Safety Web Site:**

<http://www.salford.ac.uk/hr/health-and-safety>



## **Signing in**

When attending lectures, laboratory classes or tutorials you will be required to sign in. This is not just to keep a record of attendance it is a safety requirement in case of fire.

You must inform a member of staff if you decide to leave a class early.

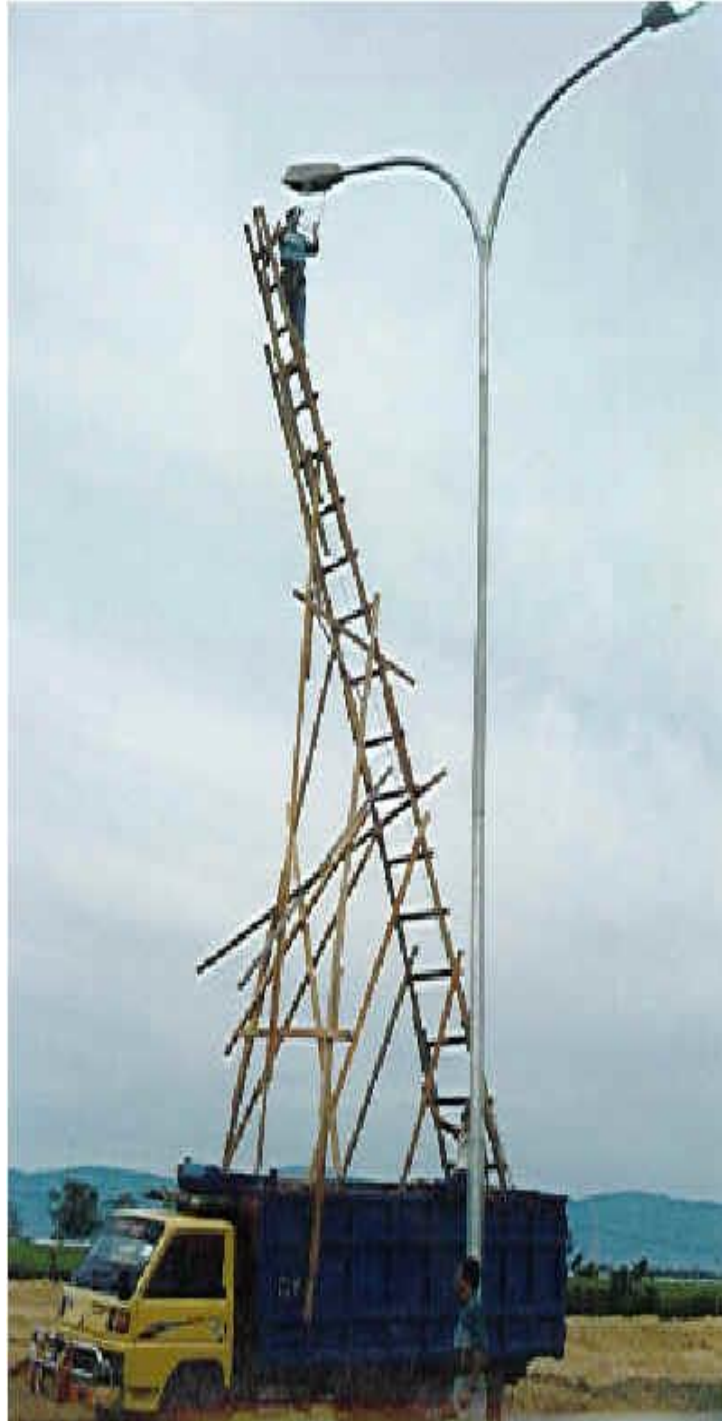
## **Safety in the Laboratory**

All experiments have been safety assessed



















Enjoy yourself at Salford

but

Think Safety !!