

Welcome to Salford

Prof Ian Morrison

The School of Computing, Sciences and Engineering

Head of School – Prof Sunil Vadera



Directorates

Computing and
Software
Engineering

Mechanical and
Aeronautical
Engineering

Civil
Engineering

Acoustics,
Video and
Media

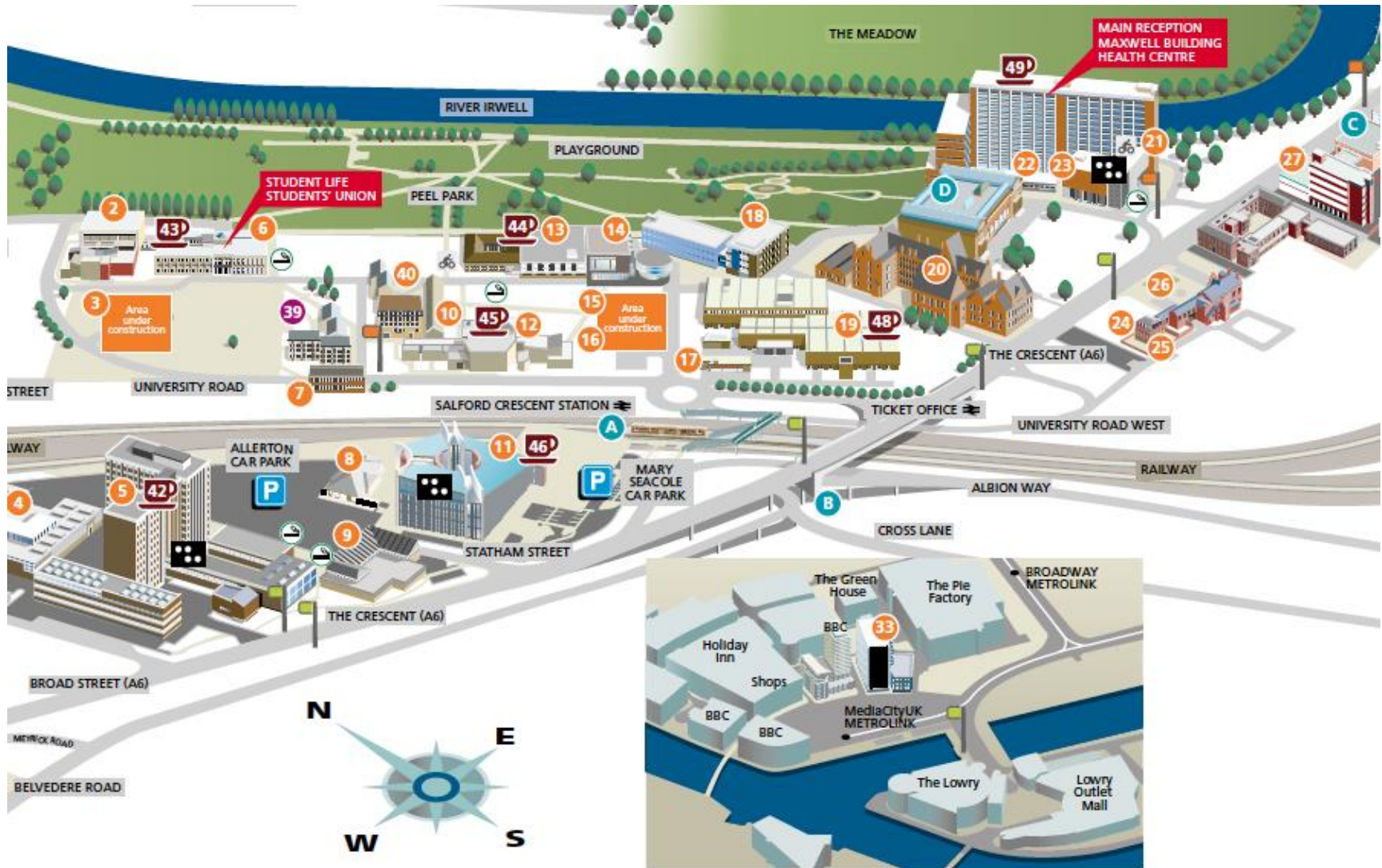
Physics and
Mathematics

Physics and Mathematics Directorate

Prof Ian Morrison

University of Salford

MANCHESTER





Newton Building Transformation



- Collaborative Learning Spaces
- Maker Space
- Café
- School Reception
- Laboratories
 - Electronics
 - Control

Programme Leaders

Physics

Dr Dan Bull



Mathematics

Dr Kevin Sandiford



Financial
Mathematics

Dr Edmund Chadwick



Technical and Support Staff



•Bruce Lewis – Technician



•Stuart Astin – Technician



•Daniel Wadsworth – School Office
•Lynsey Grace – School Office

Lectures

Laboratories

Tutorials

Employability and Employer Awareness



- Employability
- Employer Awareness - Seminars
- Placements

Thanks to



Some Recent Salford Graduate Destinations

Versarian (Materials Engineering)
Agilent (Scientific Instrumentation)
EADS Astrium (Engineering)
AMEC (Engineering)
PA Consulting (Engineering)
PGS (Geophysics)
4energy
Oak Ridge National Labs (Government Labs)
Mercer Instruments (Scientific Instruments)
Hiden (Scientific Instruments)
British Antarctic Survey (Environmental Science)
Hewlett Packard – (IT)
The Telegraph (Media)
Matter Christie College – Australia (Teaching)
Homeserve (Financial Services)
Highland Scientific (Scientific Instrumentation)
NetApp (IT- Systems Engineering)

Phds – Salford, Manchester, Lancaster,
Toledo, Oxford, Jyvaskyla.....

Bangor University (Oceanography)
Nimans (Telecommunications)
Liverpool University (Materials)
Barclays (Financial Services)
Nu Instruments (Scientific Instruments)
Malvern Instruments (Scientific Instruments)
Christie Hospital (Medical Physics)
Ted Baker (Retail Services)
University of Birmingham (Materials)
Kratos Analytical (Scientific Instruments)
SPECIFIC (Engineering)
RBS (Financial Services)
Nanoco (Chemical Engineering)

Research Areas

Acoustics

Architectural and Building Acoustics, Sound Modelling, Audio Engineering, Environmental Noise, Psychoacoustics

Informatics

Data Mining, Pattern Recognition, Data Visualisation, Digital Forensics, Symbolic Machine Learning, Digital Forensics

Robotics

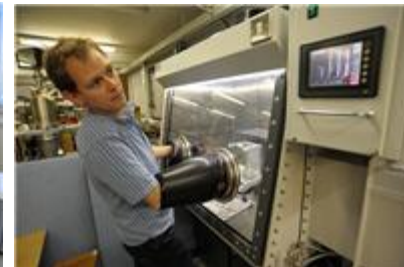
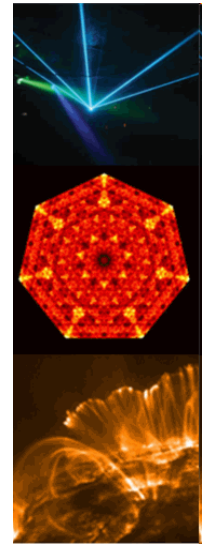
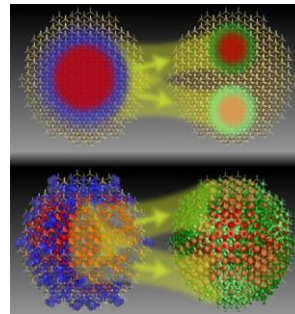
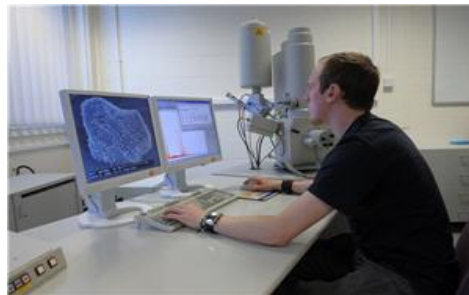
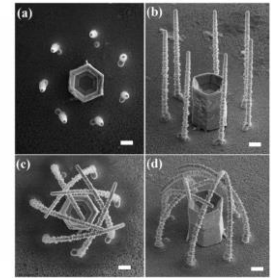
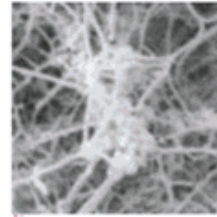
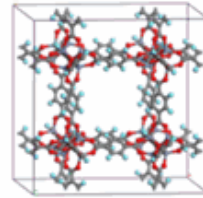
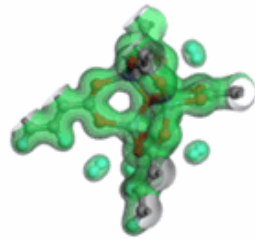
Autonomous Systems, Food Automation, Rehabilitation Robots, Cognitive Robotics, Artificial Intelligence

Engineering

Geotechnical Engineering, Masonry Arch Bridges, Telecommunication Networks, Biomedical Engineering, Transport and Railways

Physics and Materials

Applied Optics, Chemical Physics, Complexity, Energy Materials, Magnetism and Nanomaterials, Materials Characterisation



● Detailed listing on website

