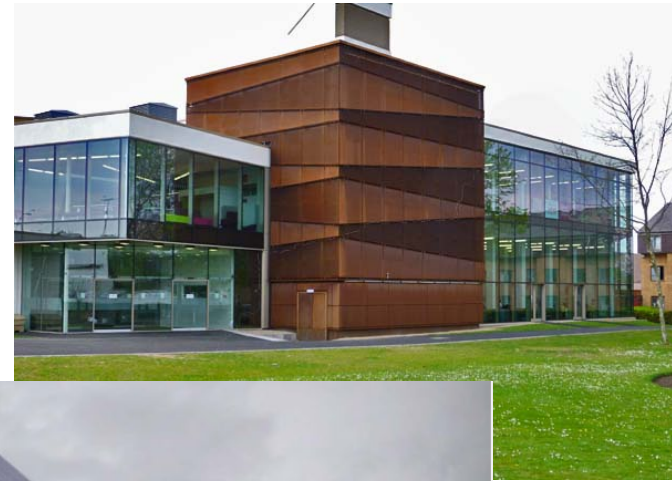
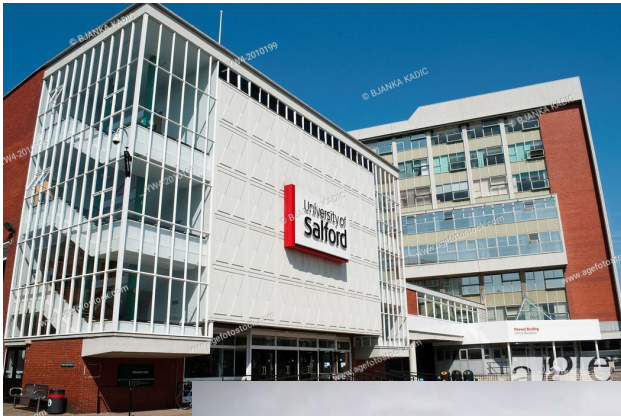


# Welcome to Salford

## Prof Ian Morrison







## VISITING US

The University of Salford is situated just a mile and a half from Manchester city centre. There are excellent transport links; Salford Crescent train station is on campus and regular bus services stop along the Crescent.

Our campus at MediaCityUK is 1.6 miles from our main campus and is connected via the number 50 bus.



University of  
**Salford**  
MANCHESTER

## CAMPUS MAP KEY

### University Buildings

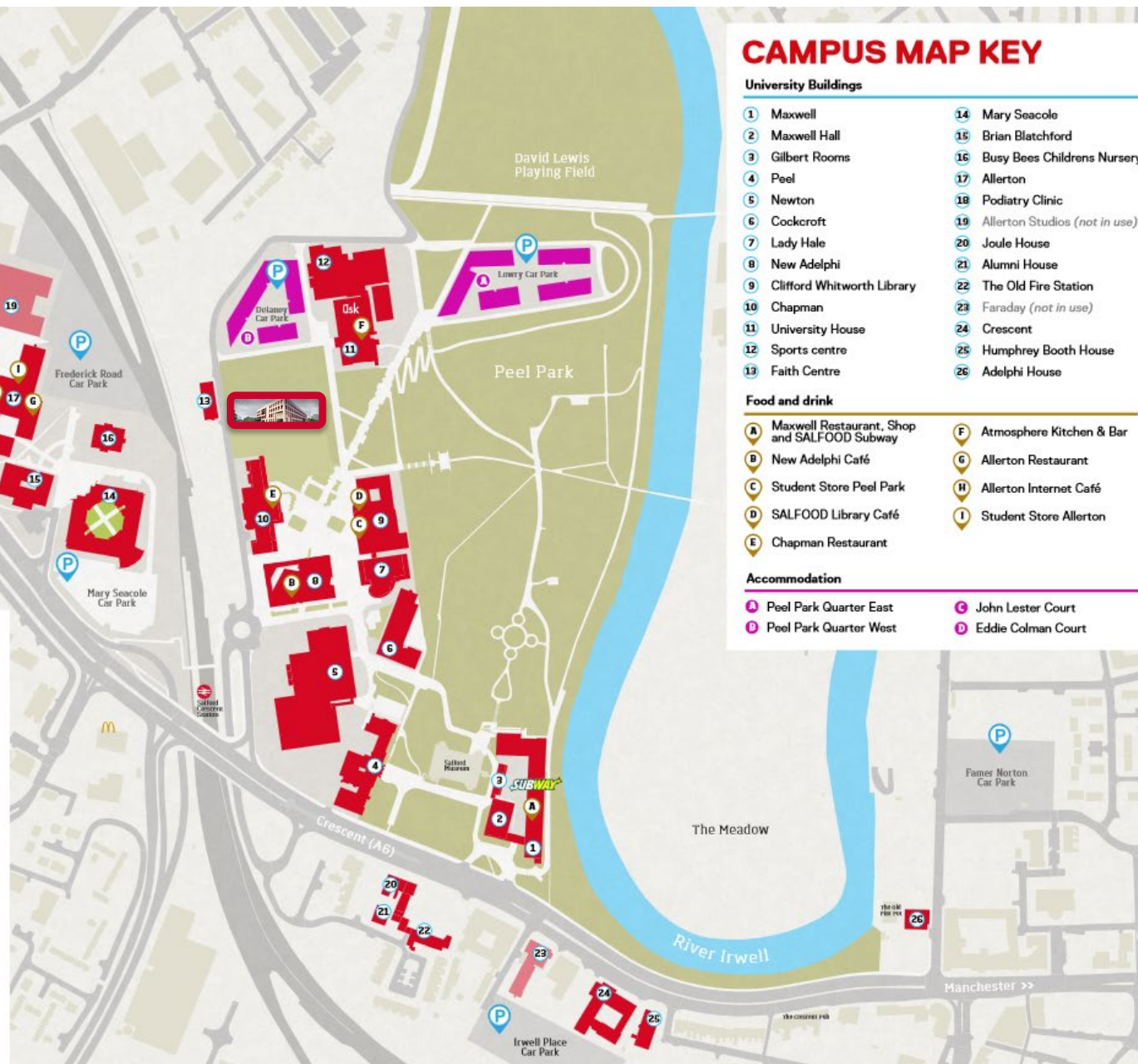
- |                              |                                  |
|------------------------------|----------------------------------|
| 1 Maxwell                    | 14 Mary Seacole                  |
| 2 Maxwell Hall               | 15 Brian Blatchford              |
| 3 Gilbert Rooms              | 16 Busy Bees Childrens Nursery   |
| 4 Peel                       | 17 Allerton                      |
| 5 Newton                     | 18 Podiatry Clinic               |
| 6 Cockcroft                  | 19 Allerton Studios (not in use) |
| 7 Lady Hale                  | 20 Joule House                   |
| 8 New Adelphi                | 21 Alumni House                  |
| 9 Clifford Whitworth Library | 22 The Old Fire Station          |
| 10 Chapman                   | 23 Faraday (not in use)          |
| 11 University House          | 24 Crescent                      |
| 12 Sports centre             | 25 Humphrey Booth House          |
| 13 Faith Centre              | 26 Adelphi House                 |

### Food and drink

- |   |                            |
|---|----------------------------|
| A Maxwell Restaurant, Shop and SALFOOD Subway | F Atmosphere Kitchen & Bar |
| B New Adelphi Café                            | G Allerton Restaurant      |
| C Student Store Peel Park                     | H Allerton Internet Café   |
| D SALFOOD Library Café                        | I Student Store Allerton   |
| E Chapman Restaurant                          |                            |

### Accommodation

- |                          |                      |
|--------------------------|----------------------|
| A Peel Park Quarter East | C John Lester Court  |
| B Peel Park Quarter West | D Eddie Colman Court |





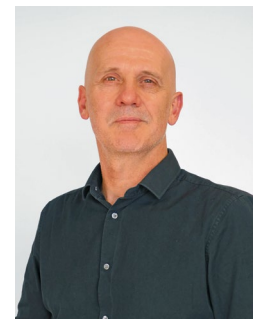
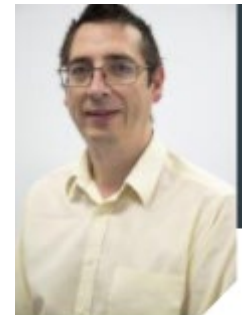
## Key Academic Staff



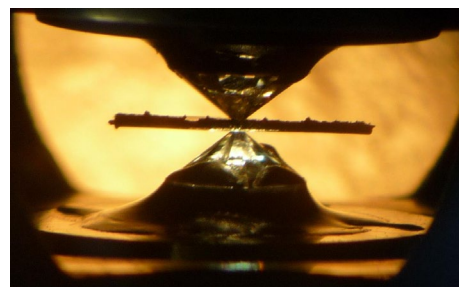
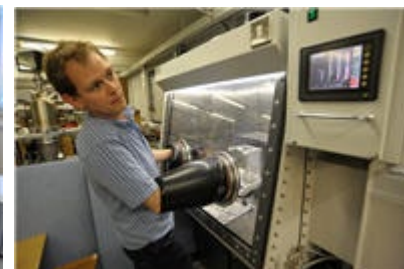
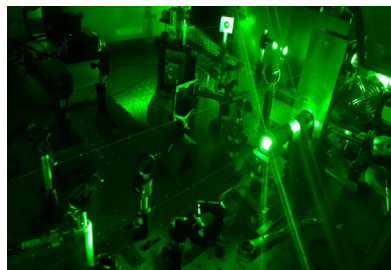
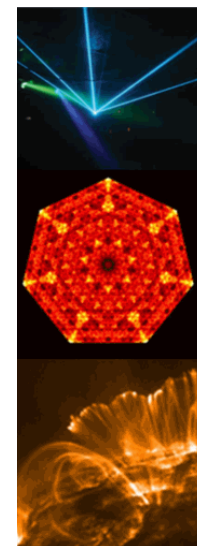
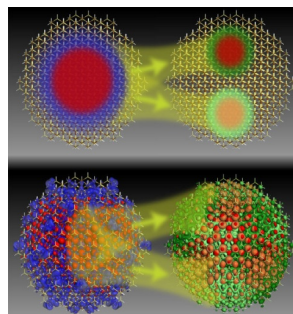
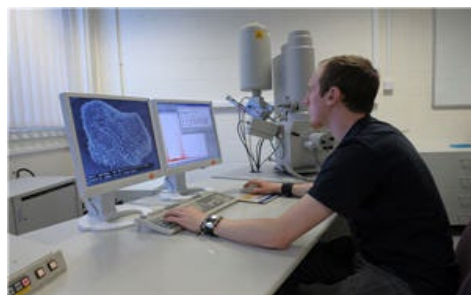
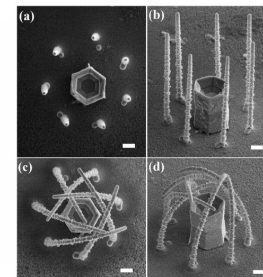
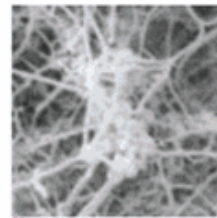
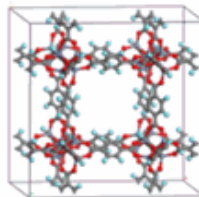
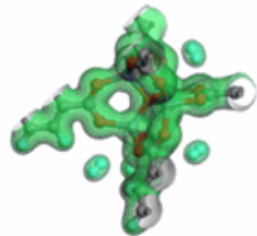
- Dr. Daniel Bull – Programme Leader - Physics
- Dr Marina Leontiadou – Programme Leader – STEM FY

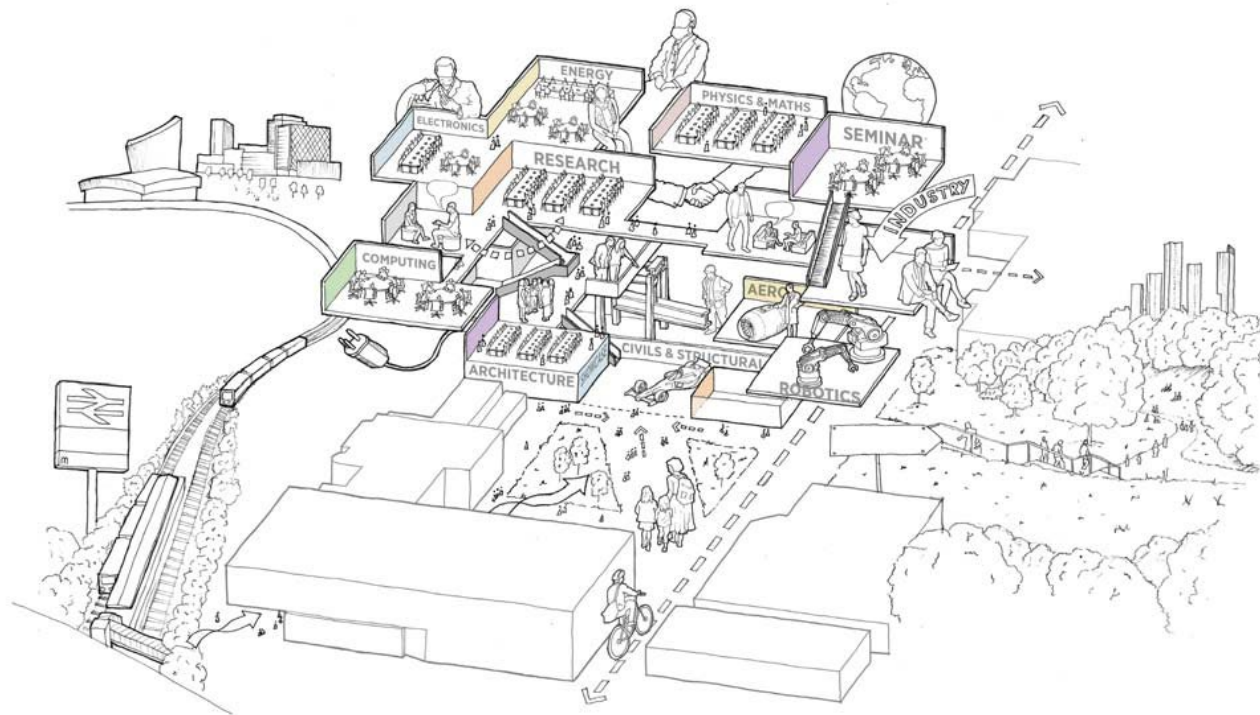


- Prof Ian Morrison – Physics Subject Head
- Dr Graham McDonald
- Dr Heather Yates
- Dr John Proctor
- Dr Mark Hughes
- Dr Tiehan Shen
- Dr James Christian
- Dr. Kevin Sandiford – Mathscope
- Dr Stuart Astin – Lab Technical Team
- Bruce Lewis – Lab Technical Team

















Thanks to



## Some Recent Salford Graduate Destinations

Versarian (Materials Engineering)  
Agilent (Scientific Instrumentation)  
EADS Astrium (Engineering)  
AMEC (Engineering)  
PA Consulting (Engineering)  
PGS (Geophysics)  
4energy  
Oak Ridge National Labs (Government Labs)  
Mercer Instruments (Scientific Instruments)  
Hiden (Scientific Instruments)  
British Antarctic Survey (Environmental Science)  
Hewlett Packard – (IT)  
The Telegraph (Media)  
Matter Christie College – Australia (Teaching)  
Homeserve (Financial Services)  
Highland Scientific (Scientific Instrumentation)  
NetApp (IT- Systems Engineering)  
Scientific Civil Service – HMRC  
Culham - UKAEA (Nuclear Fusion)  
KPMG (Finance)  
Medovate Limited (Medical Technologies)  
Plessey (Semiconductors)

PhDs – Salford, Manchester, Lancaster,  
Toledo, Oxford, Jyvaskyla, Southampton,  
Liverpool, Sussex .....

Bangor University (Oceanography)  
Nimans (Telecommunications)  
Liverpool University (Materials)  
Barclays (Financial Services)  
Nu Instruments (Scientific Instruments)  
Malvern Instruments (Scientific Instruments)  
Christie Hospital (Medical Physics)  
Ted Baker (Retail Services)  
University of Birmingham (Materials)  
Kratos Analytical (Scientific Instruments)  
SPECIFIC (Engineering)  
RBS (Financial Services)  
Nanoco (Chemical Engineering)  
National Physics Laboratory  
Rolls Royce (Aerospace)  
Patent Seekers Ltd (Patent Law)  
BBC (Sound Engineering)



# Induction week

- Monday 11:00-12:00 – Welcomes - **Chapman Building – Room 6**
- Monday 14:00-16:00 - Icebreaker session in Physics labs –  
**Science Building Room 3.07...**
- Tuesday 10:00-12:00 - Programme information session  
**BSc Physics – SEE Building 2.04**  
**Foundation Year – Science Building Room 2.03**
- Tuesday 14:00-16:00 - Group activity  
**SEE Building – Room 3.07...**
- Wednesday 11:00-12:00 - Introduction to Institute of Physics, Meet your Tutor ....  
**SEE Building – Room 0.11**
- Wednesday 12:00-14:00 - Human and Natural Sciences School Level Welcome  
**Chapman Building – Lecture Theatre 3**
- Wednesday 14:00-16:00 - Group activity  
**Science Building Room 3.07 ...**
- Thursday 10:00-12:00 - Introduction to Mathscope, Learning Resources ...  
**BSc Physics – SEE Building Room 2.09**  
**Foundation Year – Science Building Room 2.06**
- Thursday 14:00-16:00 - Group activity  
**BSc Physics - Peel Building 109**  
**Foundation Year – Peel Building 109**



# Induction Week Timetable

blackboard.salford.ac.uk - programme site – Physics programmes

<https://www.salford.ac.uk/welcome/academic-induction-schedule>

The screenshot shows the Blackboard interface for the course 'SG-PRIG-PHYSUG1-24 Physics Programmes'. The top navigation bar includes 'Content', 'Calendar', 'Announcements', 'Discussions', 'Grades', 'Messages', 'Analytics', and 'Groups'. The 'Content' tab is active, displaying a list of course items. On the left, the 'Course Staff' section lists Daniel Bull and Marina Leontiadou as Programme Leaders. Below this, the 'Details & Actions' section includes links for 'Participants', 'Course Image', 'Module is open', and 'Attendance'. The main content area shows two items: '\* Physics & STEM Foundation Year Induction \*' and 'Welcome and Induction September 2023 [School & University Information]'. Both items are marked as 'Visible to students'.

SG-PRIG-PHYSUG1-24

## Physics Programmes

Course Settings

Student Preview

Content Calendar Announcements Discussions Grades Messages Analytics Groups

### Course Staff

Daniel Bull  
PROGRAMME LEADER

Marina Leontiadou  
PROGRAMME LEADER

[Show more](#)

### Details & Actions

Participants  
[View everyone on your Module](#)

Course Image  
[Edit display settings](#)

Module is open  
[Students can access this Module](#)

Attendance  
[Mark attendance](#)

### Content

\* Physics & STEM Foundation Year Induction \*

Visible to students

Please read this first - Essential information for September 2023 Induction Week - 'Academic/Departmental Induction' for Students of All Levels

Welcome and Induction September 2023 [School & University Information]

Visible to students

Welcome to Salford and the beginning of your studies with us. You need to work through the information and resources within this Academic Induction space to help you settle in and get off to a good start over the first few weeks

The new School of Science  
Engineering & Environment Building

# ask

**askUS is your home for all things outside of your studies.**

We handle your enquiries, support you to be successful in all aspects of your life and provide advice, guidance and referrals to make sure you're having the best experience possible.

We cover a lot of things at askUS – uni can be a pretty big place!  
We've set everything out into four key areas for you.

STUDENT HUB

FAQS

<https://www.salford.ac.uk/askus>





SharePoint

University of Salford Student Hub askUS Support ▾ In your school ▾ Careers and Enterprise Student Systems ▾ Library Digital IT Postgraduates ▾ Apprentices Students' Union

University of Salford Student Hub

University of Salford MANCHESTER

**Guide for returning students**  
Visit our website →

**International student events**

**Help with the cost of living**

**Maths and numeracy support**

**Latest major emails and newsletters**

**LOG IN TO BLACKBOARD**  
Access your course materials

**CHECK IN TO MY ACADEMIC SESSION**  
Register your attendance at a session

**askUS**  
Need any help or support? Just askUS!

[https://testlivesalfordac.sharepoint.com/sites/UoS\\_Students](https://testlivesalfordac.sharepoint.com/sites/UoS_Students)

# StEP Training – Study Goal Login



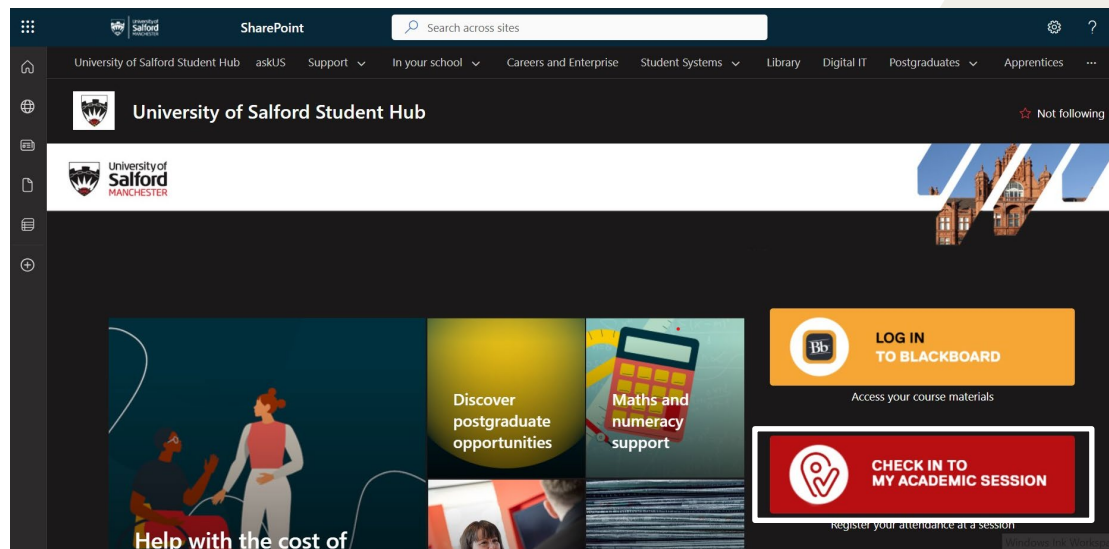
DIGITAL IT

To access **Study Goal**:

Use the following QR code

or

From the University of Salford Student Hub – click on the **CHECK IN TO MY ACADEMIC SESSION**



Proprietary Information - ©University of Salford 2023


[Back to TOC](#)



# StEP Training – Study Goal Login – Multi Factor Authentication



DIGITAL IT




### Sign in

Please enter your University email address

[Can't access your account?](#)

[Next](#)

By accessing this University of Salford IT System you are agreeing to The University of Salford Acceptable Use Policy (AUP). A copy of this policy is available on the University Website.



← t.wfrancis@edu.salford.ac.uk


### Enter password

Password

[Forgot my password](#)

[Sign in](#)

By accessing this University of Salford IT System you are agreeing to The University of Salford Acceptable Use Policy (AUP). A copy of this policy is available on the University Website.



t.wfrancis@edu.salford.ac.uk

### More information required

Your organization needs more information to keep your account secure

[Use a different account](#)

[Learn more](#)


[Next](#)

By accessing this University of Salford IT System you are agreeing to The University of Salford Acceptable Use Policy (AUP). A copy of this policy is available on the University Website.

### Keep your account secure

Your organization requires you to set up the following methods of proving who you are.

#### Microsoft Authenticator

 **Start by getting the app**

On your phone, install the Microsoft Authenticator app. [Download now](#)

After you install the Microsoft Authenticator app on your device, choose "Next".

[I want to use a different authenticator app](#)

[Next](#)

[I want to set up a different method](#) [Skip setup](#)

The first time you use Study Goal you will need to complete the authentication process

# StEP Training – Study Goal Login



**DIGITAL IT**

Once Authentication has been approved, the following window appears:

From the Institution dropdown, select **University of Salford** or type **Sal** in the Institution box

A screenshot of the 'Study Goal' login interface. At the top is a blue header bar with the text 'Study Goal' on the left and a globe icon with a dropdown arrow on the right. Below the header is a large white area. On the left side of this area is an illustration of a person with dark hair, wearing a blue jacket, sitting cross-legged and holding a tablet. On the right side is a form with a red border. The form has a label 'Institution' above a text input field. The input field contains the text 'sa'. Below the input field is a dropdown menu showing 'University of Salford'.

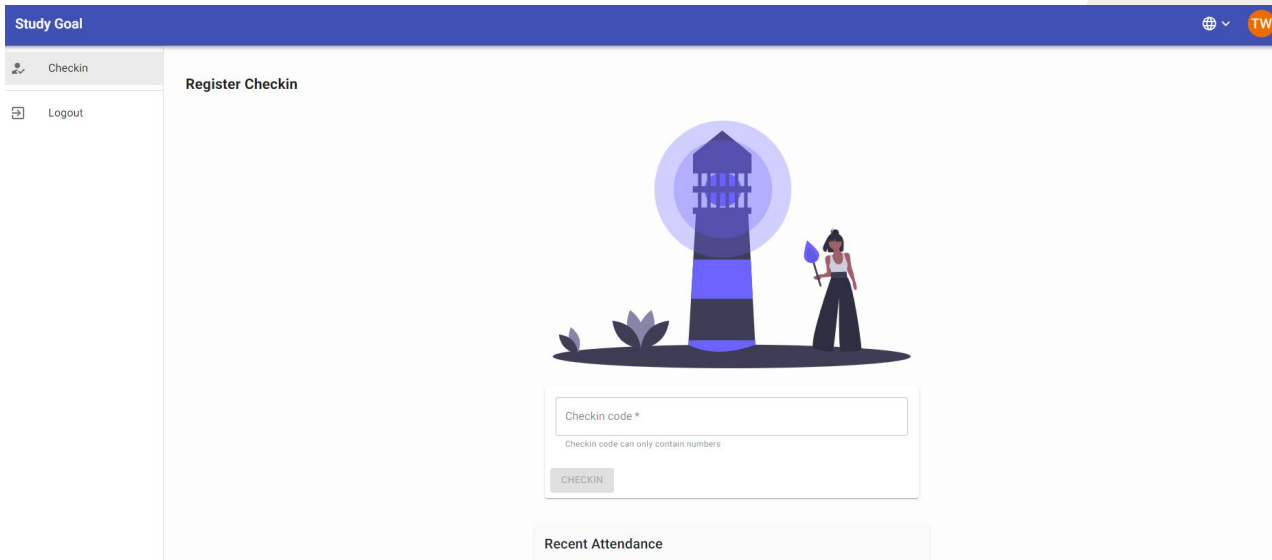
Click the **Login** button

Proprietary Information - ©University of Salford 2023

[Back to TOC](#)

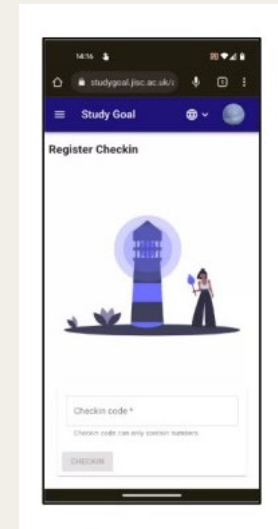
# StEP Training – Study Goal Signing In

The following window appears:



The desktop view of the 'Study Goal' application shows a blue header bar with the text 'Study Goal' and a user icon labeled 'TW'. On the left, a sidebar contains 'Checkin' and 'Logout' links. The main content area is titled 'Register Checkin' and features a large illustration of a lighthouse with a person standing next to it. Below the illustration is a form with a 'Checkin code \*' input field, a note 'Checkin code can only contain numbers', and a 'CHECKIN' button. At the bottom, there is a 'Recent Attendance' section.

Device view



The mobile view of the 'Study Goal' application shows a responsive layout. The header bar is blue with 'Study Goal' and a user icon. The sidebar is collapsed into a hamburger menu. The main content area is titled 'Register Checkin' and features the same lighthouse illustration. Below the illustration is a form with a 'Checkin code \*' input field, a note 'Checkin code can only contain numbers', and a 'CHECKIN' button.

Mobile view



# StEP Training – Study Goal Signing In



DIGITAL IT

Input the 4 or 5 digit code provided by the Staff Member to record your attendance at the session:

Study Goal

Checkin

Logout

Register Checkin

Checkin code \*

2658

Checkin code can only contain numbers

CHECKIN

Click the **Checkin** button

If you have checked in successfully, the following message should appear in a green pop-up box:

✓ Thanks. You've successfully checked in ✕

Proprietary Information - ©University of Salford 2023

[Back to TOC](#)

# StEP Training – Study Goal System Messages



**DIGITAL IT**

If the check in is unsuccessful, the following is an example of what a pop-up code would look like:

❗ Invalid code - Please check with your tutor that you have the correct code and are enrolled in the module ✕

Message	Why
Checkin code can only contain numbers	You have attempted to check in using letters or symbols
You have already checked in to this event	You have already used the code to check in
Invalid code – please check with your tutor that you have the correct code and are enrolled in the module	You have tried to input an incorrect code
Sorry, the session you’re trying to attend has already ended	Registration window of an hour has passed. Please contact the staff member who is teaching the session.
Sorry, something went wrong. Try again later	Try again as it may be a temporary technical issue. If you continue to experience this error message report it to the School Office.

# StEP Training – Study Goal

## Viewing Attendance Record



DIGITAL IT

Once your attendance has been recorded successfully you can view in the Recent Attendance box

The screenshot shows the 'Study Goal' app interface. At the top, there's a blue header with 'Study Goal' and a globe icon. Below the header, there's a sidebar with 'Checkin' and 'Logout' options. The main content area is titled 'Register Checkin' and features an illustration of a lighthouse and a person. Below the illustration is a 'Checkin code \*' input field with a note 'Checkin code can only contain numbers' and a 'CHECKIN' button. At the bottom, there's a 'Recent Attendance' box with a red border, containing the date 'Thu, 10 Aug 2023' and the text 'Exp Fund Int Nursing Pract' and 'Exp Fund Int Nursing Pract 16:00 10/8/2023'. A red arrow points from the text 'Recent Attendance box' to this box.

Study Goal

Checkin

Logout

Register Checkin

Checkin code \*

Checkin code can only contain numbers

CHECKIN

**Recent Attendance**

Thu, 10 Aug 2023

Exp Fund Int Nursing Pract

Exp Fund Int Nursing Pract 16:00 10/8/2023



# StEP Training – Study Goal Questions or Issues?



**DIGITAL IT**

**Contact your School Office in person or via email:**

- Salford Business School - [SBS-HUB@salford.ac.uk](mailto:SBS-HUB@salford.ac.uk)
- School of Arts, Media and Creative Technology - [am-admin@salford.ac.uk](mailto:am-admin@salford.ac.uk)
- School of Health & Society - [HealthSociety-School-Reception@salford.ac.uk](mailto:HealthSociety-School-Reception@salford.ac.uk)
- School of Science, Engineering & Environment - [SEESchoolEnquiries@salford.ac.uk](mailto:SEESchoolEnquiries@salford.ac.uk)
- Salford Languages - [Salfordlanguages@salford.ac.uk](mailto:Salfordlanguages@salford.ac.uk)



# DIGITAL IT

Technician Commitment



**Your code for today's session is**

**####**