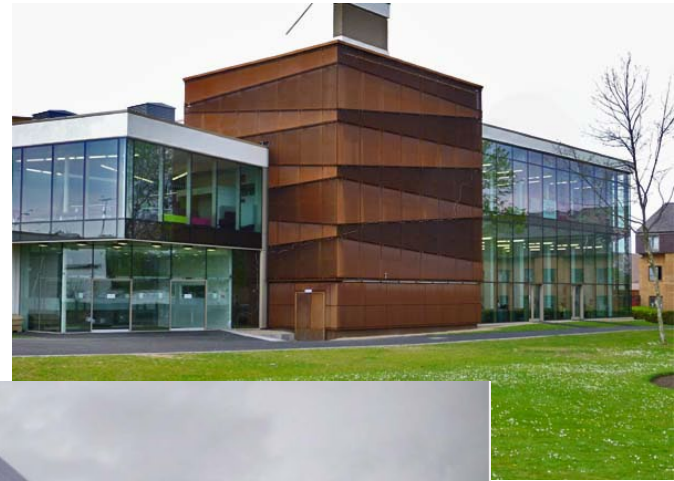
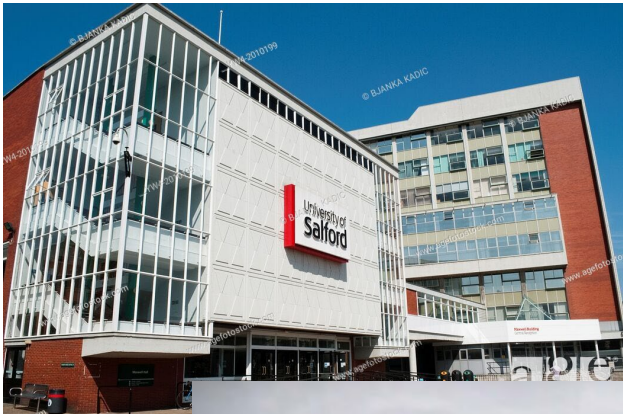


**Welcome to Salford**

**Prof Ian Morrison**







## VISITING US

The University of Salford is situated just a mile and a half from Manchester city centre. There are excellent transport links; Salford Crescent train station is on campus and regular bus services stop along the Crescent.

Our campus at MediaCityUK is 1.6 miles from our main campus and is connected via the number 50 bus.



University of  
**Salford**  
MANCHESTER

## CAMPUS MAP KEY

### University Buildings

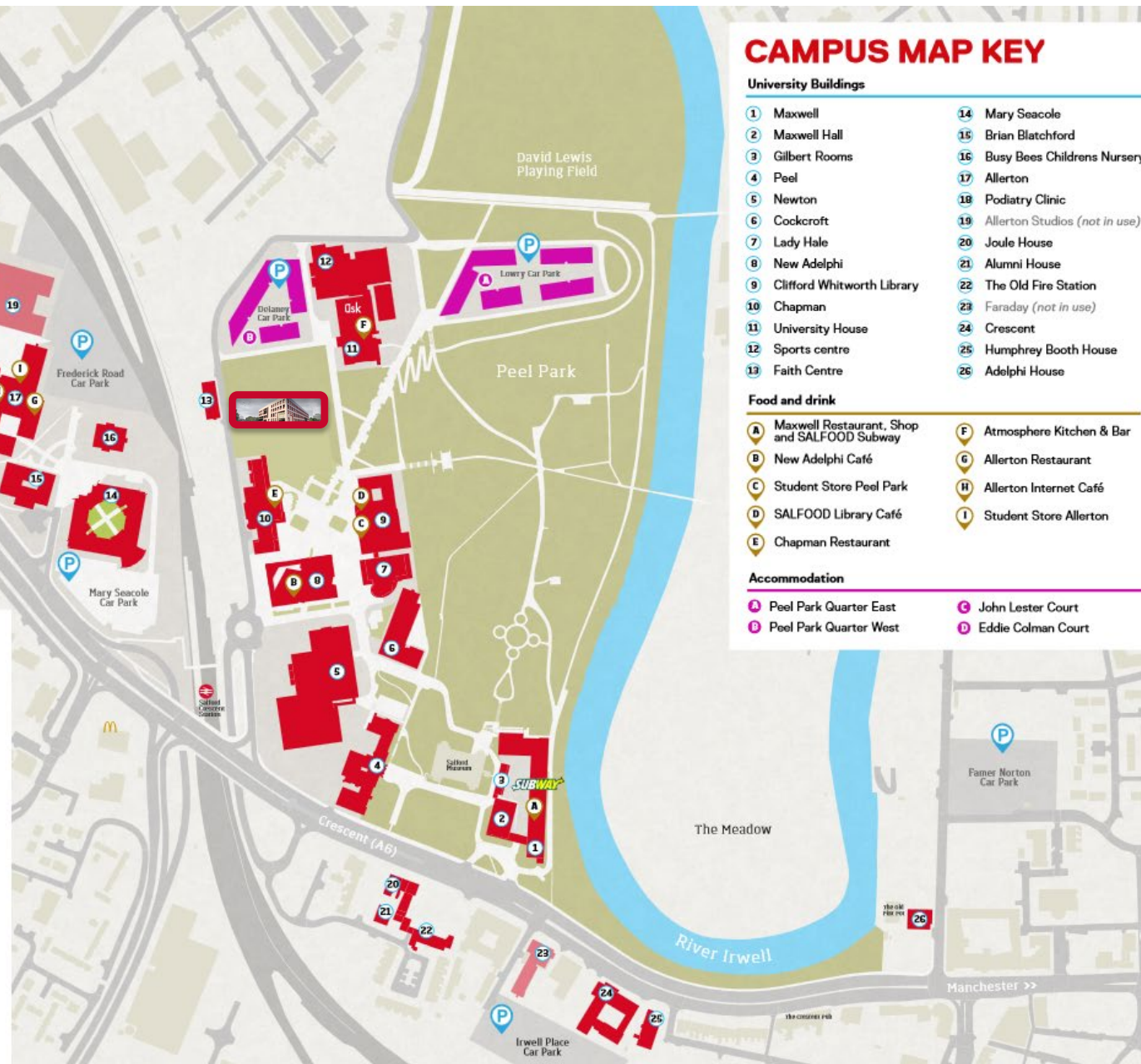
- |                              |   |
|------------------------------|---|
| 1 Maxwell                    | 14 Mary Seacole                           |
| 2 Maxwell Hall               | 15 Brian Blatchford                       |
| 3 Gilbert Rooms              | 16 Busy Bees Childrens Nursery            |
| 4 Peel                       | 17 Allerton                               |
| 5 Newton                     | 18 Podiatry Clinic                        |
| 6 Cockcroft                  | 19 Allerton Studios ( <i>not in use</i> ) |
| 7 Lady Hale                  | 20 Joule House                            |
| 8 New Adelphi                | 21 Alumni House                           |
| 9 Clifford Whitworth Library | 22 The Old Fire Station                   |
| 10 Chapman                   | 23 Faraday ( <i>not in use</i> )          |
| 11 University House          | 24 Crescent                               |
| 12 Sports centre             | 25 Humphrey Booth House                   |
| 13 Faith Centre              | 26 Adelphi House                          |

### Food and drink

- |   |                            |
|---|----------------------------|
| A Maxwell Restaurant, Shop and SALFOOD Subway | F Atmosphere Kitchen & Bar |
| B New Adelphi Café                            | G Allerton Restaurant      |
| C Student Store Peel Park                     | H Allerton Internet Café   |
| D SALFOOD Library Café                        | I Student Store Allerton   |
| E Chapman Restaurant                          |                            |

### Accommodation

- |                          |                      |
|--------------------------|----------------------|
| A Peel Park Quarter East | C John Lester Court  |
| B Peel Park Quarter West | D Eddie Colman Court |





Key Academic Staff

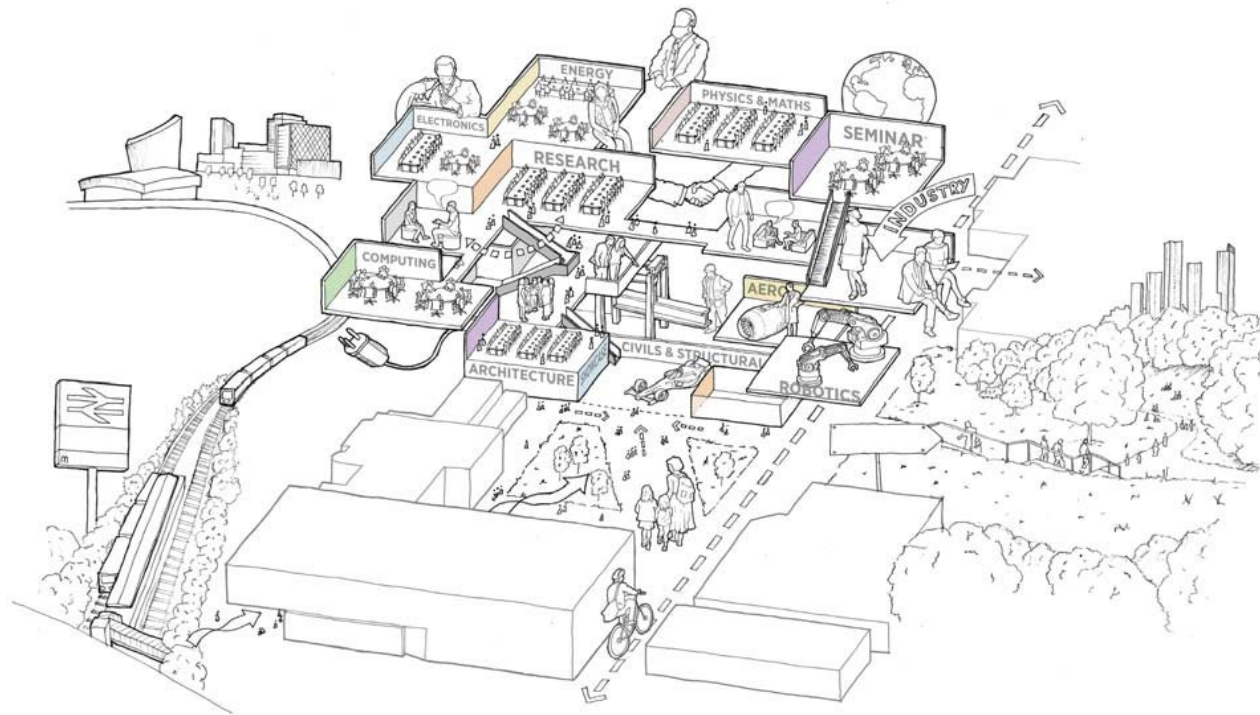


- Dr. Daniel Bull – Programme Leader - Physics
- Dr Marina Leontiadou – Programme Leader – STEM FY

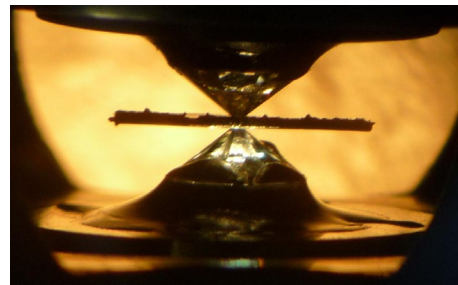
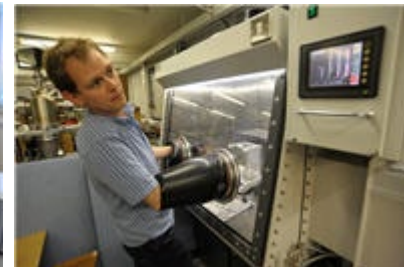
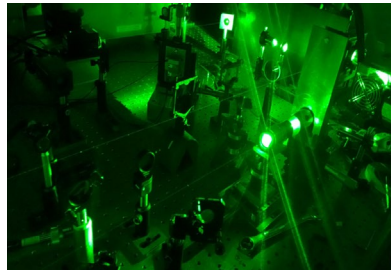
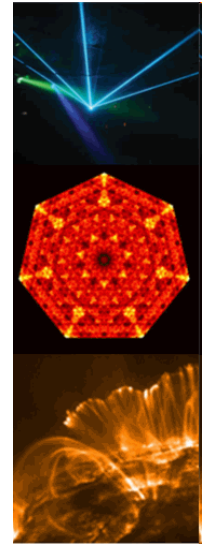
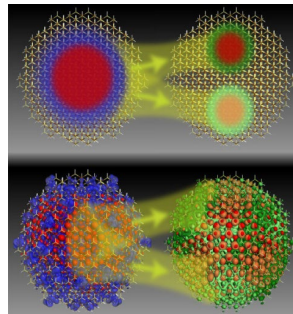
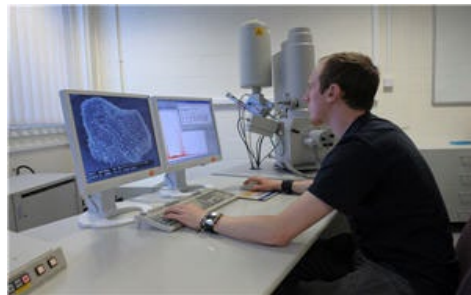
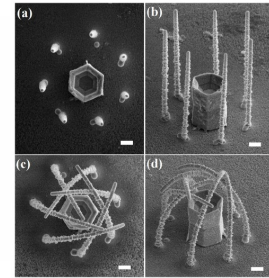
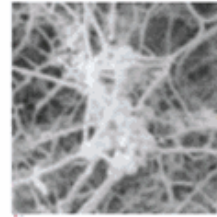
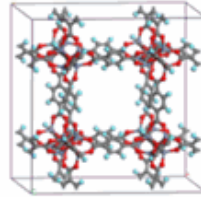
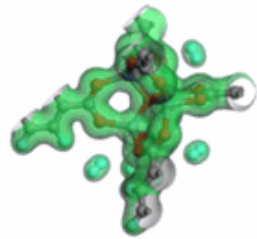


- Prof Ian Morrison – Physics Subject Head
- Dr Graham McDonald
- Dr John Proctor
- Dr Mark Hughes
- Dr Tiehan Shen
- Dr James Christian
- Dr. Kevin Sandiford – Mathscope
- Dr Stuart Astin – Lab Technical Team
- Bruce Lewis – Lab Technical Team









## Physics

# How strange ice could form in the extremely hot interiors of planets

In an experiment simulating what happens deep in the interiors of planets, scientists have found that liquid can be compressed into ice crystals – even at extremely high temperatures

By [Karmela Padavic-Callaghan](#)

28 August 2024



🔴 We are closer to understanding how liquid behaves in the interiors of planets, such as Venus  
Artisam P/Shutterstock

Researchers have compressed super-hot liquids between diamonds to demystify how fluids behave under extreme conditions, such as in the interiors of planets.

Physicists have struggled to track how a liquid's density changes at extreme temperatures and pressures. To overcome this challenge, [John Proctor](#) at the University of Salford in the UK and his colleagues have used diamonds and lasers.











Thanks to 

## Some Recent Salford Graduate Destinations

Versarian (Materials Engineering)  
Agilent (Scientific Instrumentation)  
EADS Astrium (Engineering)  
AMEC (Engineering)  
PA Consulting (Engineering)  
PGS (Geophysics)  
4energy  
Oak Ridge National Labs (Government Labs)  
Mercer Instruments (Scientific Instruments)  
Hiden (Scientific Instruments)  
British Antarctic Survey (Environmental Science)  
Hewlett Packard – (IT)  
The Telegraph (Media)  
Matter Christie College – Australia (Teaching)  
Homeserve (Financial Services)  
Highland Scientific (Scientific Instrumentation)  
NetApp (IT- Systems Engineering)  
Scientific Civil Service – HMRC  
Culham - UKAEA (Nuclear Fusion)  
KPMG (Finance)  
Medovate Limited (Medical Technologies)  
Plessey (Semiconductors)

PhDs – Salford, Manchester, Lancaster,  
Toledo, Oxford, Jyvaskyla, Southampton,  
Liverpool, Sussex .....

Bangor University (Oceanography)  
Nimans (Telecommunications)  
Liverpool University (Materials)  
Barclays (Financial Services)  
Nu Instruments (Scientific Instruments)  
Malvern Instruments (Scientific Instruments)  
Christie Hospital (Medical Physics)  
Ted Baker (Retail Services)  
University of Birmingham (Materials)  
Kratos Analytical (Scientific Instruments)  
SPECIFIC (Engineering)  
RBS (Financial Services)  
Nanoco (Chemical Engineering)  
National Physics Laboratory  
Rolls Royce (Aerospace)  
Patent Seekers Ltd (Patent Law)  
BBC (Sound Engineering)





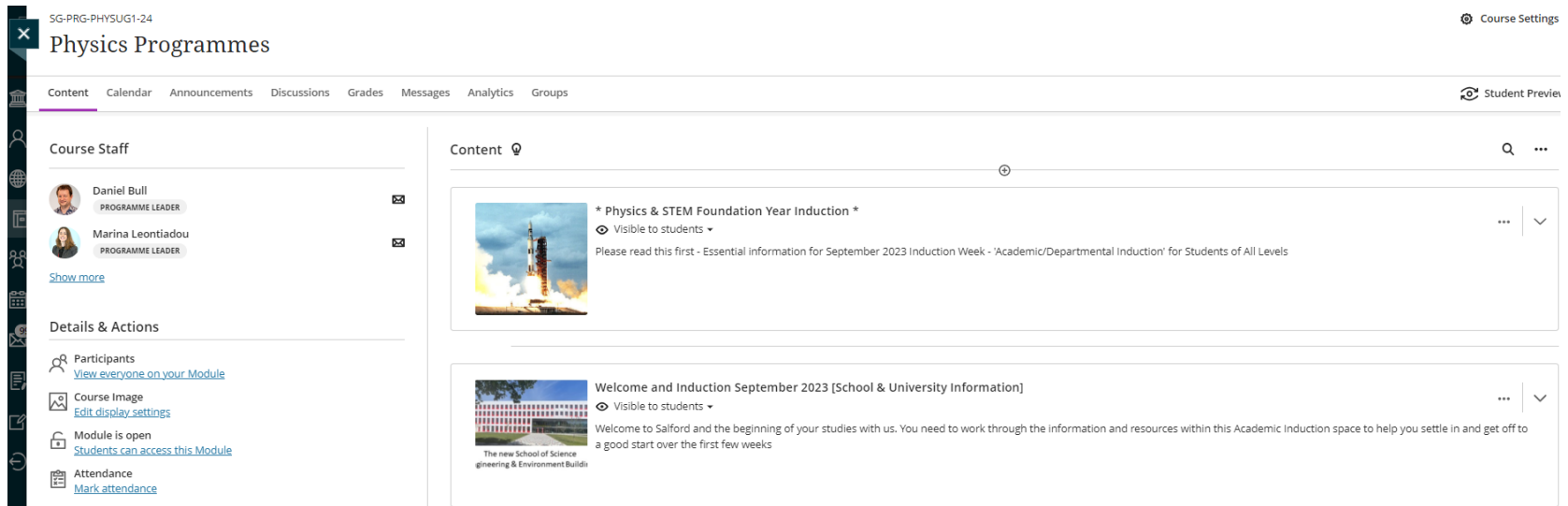
# Induction week

- Monday 10:00-12:00 – Welcome – **Maxwell Building – Room 428**
- Monday 14:00-16:00 - Icebreaker session in Physics labs –  
**SEE Building Room 3.07...**
- Tuesday 10:00-12:00 - Programme information session  
**BSc Physics – SEE Building 2.04**  
**Foundation Year –SEE Building Room 2.03**
- Tuesday 14:00-16:00 - Group activity  
**SEE Building – Room 3.07...**
- Wednesday 11:00-12:00 - Introduction to Institute of Physics, Meet your Tutor ....  
**SEE Building – Room 0.11**
- Wednesday 12:00-13:00 - Human and Natural Sciences School Level Welcome  
**Chapman Building – Lecture Theatre 3**
- Wednesday 14:00-16:00 - Group activity  
**SEE Building Room 3.07 ...**
- Thursday 10:00-12:00 - Group activity  
**SEE Building Room 0.11**
- Thursday 14:00-16:00 - Introduction to Mathsscope, Learning Resources ...  
**BSc Physics – SEE Building Room 2.06**  
**Foundation Year –SEE Building Room 3.01**

# Induction Week Timetable

blackboard.salford.ac.uk - programme site – Physics programmes

<https://www.salford.ac.uk/welcome/academic-induction-schedule>



The screenshot shows a Blackboard course page for 'Physics Programmes' (SG-PRG-PHYSUG1-24). The page is divided into several sections:

- Course Staff:** Lists Daniel Bull and Marina Leontiadou as Programme Leaders, with a 'Show more' link.
- Details & Actions:** Includes links for 'Participants' (View everyone on your Module), 'Course Image' (Edit display settings), 'Module is open' (Students can access this Module), and 'Attendance' (Mark attendance).
- Content:** Displays two items:
  - \* Physics & STEM Foundation Year Induction \*:** Visible to students. Description: 'Please read this first - Essential information for September 2023 Induction Week - 'Academic/Departmental Induction' for Students of All Levels'. Includes an image of a rocket launch.
  - Welcome and Induction September 2023 [School & University Information]:** Visible to students. Description: 'Welcome to Salford and the beginning of your studies with us. You need to work through the information and resources within this Academic Induction space to help you settle in and get off to a good start over the first few weeks'. Includes an image of the School of Science, Engineering & Environment Building.







# ask

**askUS is your home for all things outside of your studies.**

We handle your enquiries, support you to be successful in all aspects of your life and provide advice, guidance and referrals to make sure you're having the best experience possible.

We cover a lot of things at askUS – uni can be a pretty big place!  
We've set everything out into four key areas for you.

STUDENT HUB


FAGS


<https://www.salford.ac.uk/askus>





SharePoint

University of Salford Student Hub askUS Support ▾ In your school ▾ Careers and Enterprise Student Systems ▾ Library Digital IT Postgraduates ▾ Apprentices Students' Union


 **University of Salford Student Hub**

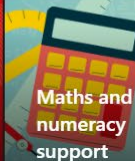
 **University of Salford**  
MANCHESTER




 **Guide for returning students**  
Visit our website →


**International student events**


 **Help with the cost of living**

 **Maths and numeracy support**

**Latest major emails and newsletters**

 **LOG IN TO BLACKBOARD**  
Access your course materials

 **CHECK IN TO MY ACADEMIC SESSION**  
Register your attendance at a session

 **ASKUS**  
Need any help or support? Just askUS!

[salford.ac.uk/students](https://salford.ac.uk/students)

[https://testlivesalfordac.sharepoint.com/sites/UoS\\_Students](https://testlivesalfordac.sharepoint.com/sites/UoS_Students)





**Your code for today's session is**

**####**

# Your Favourite Scientist or Engineer

- **As a group discuss the scientists and engineers that have inspired you most.**
- **Choose a scientist and research their background and achievements**
- **Put together a circa 5 minute presentation to be given as a group**
- **Include**

**Their background**

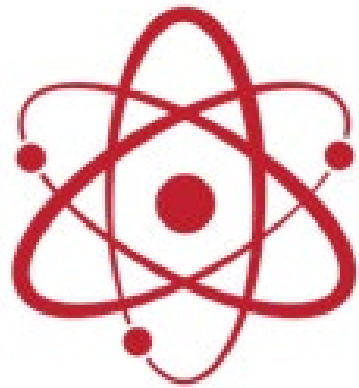
**Their discovery, invention ....**

**Why their discovery/invention was so important**

**What their discovery/invention led to**

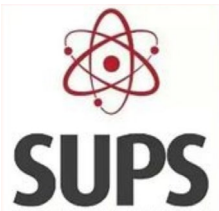
**Group presentations to be given on Thursday morning.**



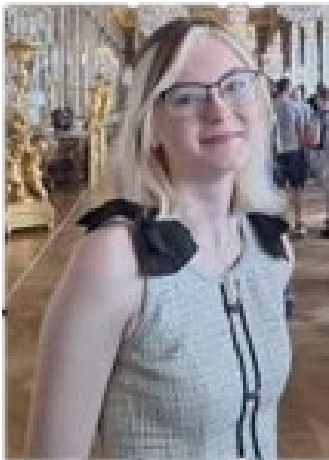


# SUPS

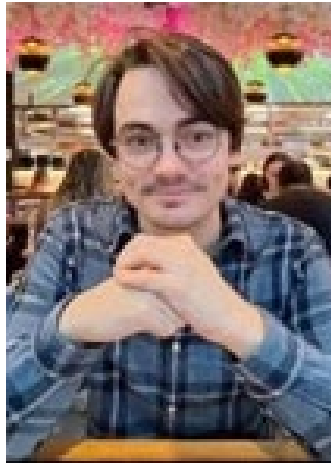
Salford University Physics Society



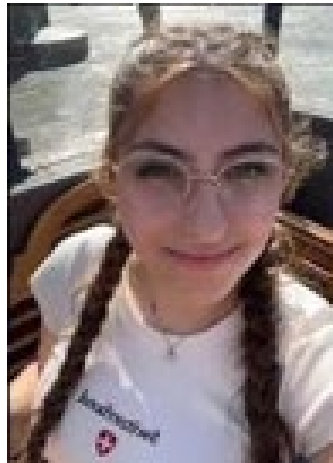
# Committee <3



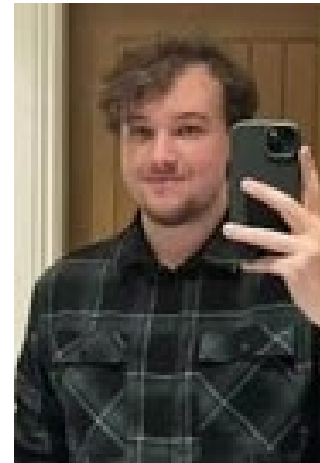
**Emily Welsh**  
**President**



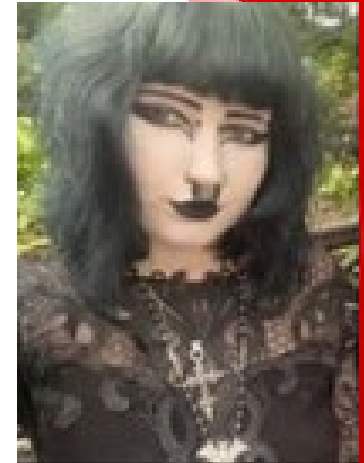
**James Hammond**  
**Vice-President**



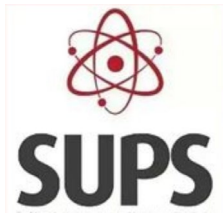
**Kiesha Shaw**  
**Wellbeing Officer**



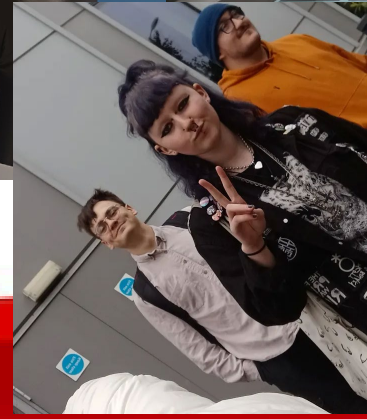
**Josh Gomersall**  
**Treasurer**



**Ellie Rea**  
**Events Manager**



# Socials!



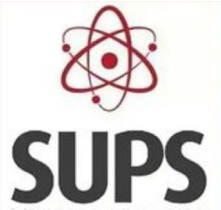


# Trips

## Previous trip to berlin



We are in the process of planning a trip to Europe in Easter! If you would be interested look out for details being announced on our socials!

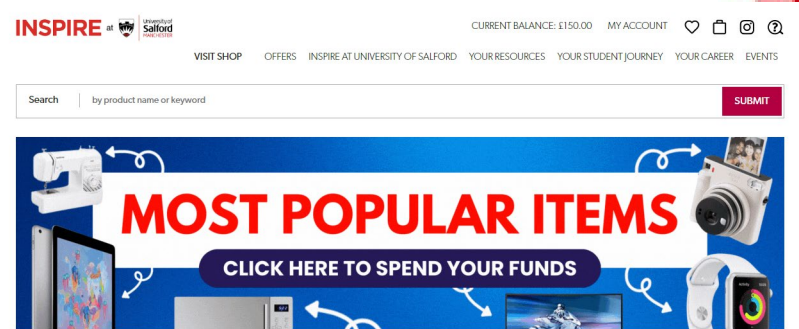


Salford  
**INSPIRE** at  University of  
Salford  
MANCHESTER  
inspire

Website homepage

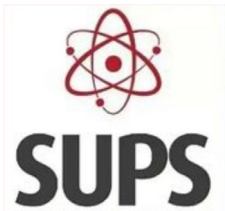
Salford inspire website link

<https://www.salford-inspire.co.uk/>



More information about Salford inspire

<https://www.salford.ac.uk/askus/topics/money/salford-inspire>



# How to join the society!

Students' union website

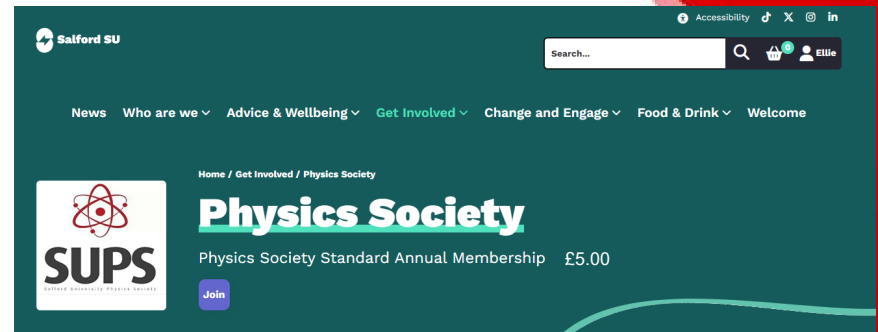
<https://www.salfordsu.com/>

(the students union have recently gotten a new website

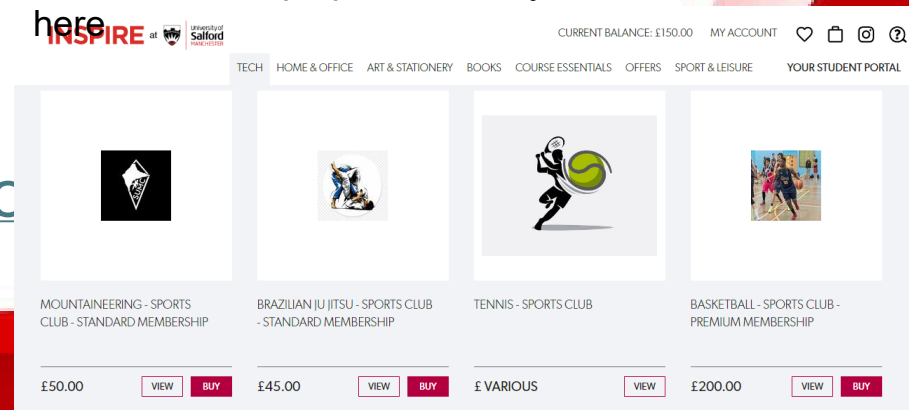
so, make sure to double check you have accessed the right one!)

Salford inspire

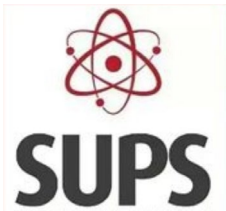
<https://www.salford-inspire.co>



Our membership option will very soon be available here







# Blackboard

Module page on  
blackboard

The screenshot displays the Blackboard interface for the University of Salford. The left-hand navigation menu includes links for Information, Elicé Rica, Activity, Modules (highlighted with a red arrow), Communities, calendar, Messages, Marks, Tools, and Sign Out. The main content area is titled 'Modules' and shows a search bar, filters, and a list of 25 results. The visible results include:

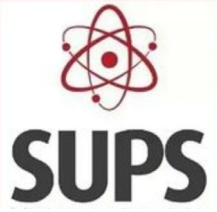
- Trimester 2 (24-25)
  - SG-F300-30096-60604-25 Astrophysics and Planetary Physics
  - SG-F300-30094-60632-25 Condensed Matter Physics
- Trimester 1 & 2 & 3 (24-25)
  - SG-F300-30069-13748-25 Project in Physics
- Programme Site
  - SG-CTM-HNSPE-25 Human and Natural Sciences - Placement and Employability
  - SG-CTM-HNSPE-24 Human and Natural Sciences - Placement and Employability

Blackboard web link

<https://blackboard.salford.ac.uk/>

Blackboard guide

<https://www.salford.ac.uk/library/know-how/blackboard>



# Tour and SU





**SUPS**

## Our Socials!



@salforduniphysicssociet



y

Salford University Physics Society - SUPS



@UoS\_Physics\_Soc



Access our discord server via the invite on  
linktree

Linktree Link

<https://linktr.ee/salforduniphysicssociety>





The Institute of Physics (IOP) is the professional body and learned society for physics in the UK and Ireland, with an active role in promoting co-operation in physics around the world. We strive to make physics accessible to people from all backgrounds.

- **Advising government**
- **Supporting Research – Subject Groups**
- **Supporting Physics Education**  
**Schools**  
[Universities](#)
- [Careers with Physics](#)
- **Local Branch Activities**  
**Volunteering**  
**Branch Talks**

# Degree accreditation and recognition

The accreditation of physics degrees and recognition of interdisciplinary and combined science degrees are important parts of our support for higher education. We accredit and recognise degree programmes in the UK and Republic of Ireland (ROI).

## Project Juno



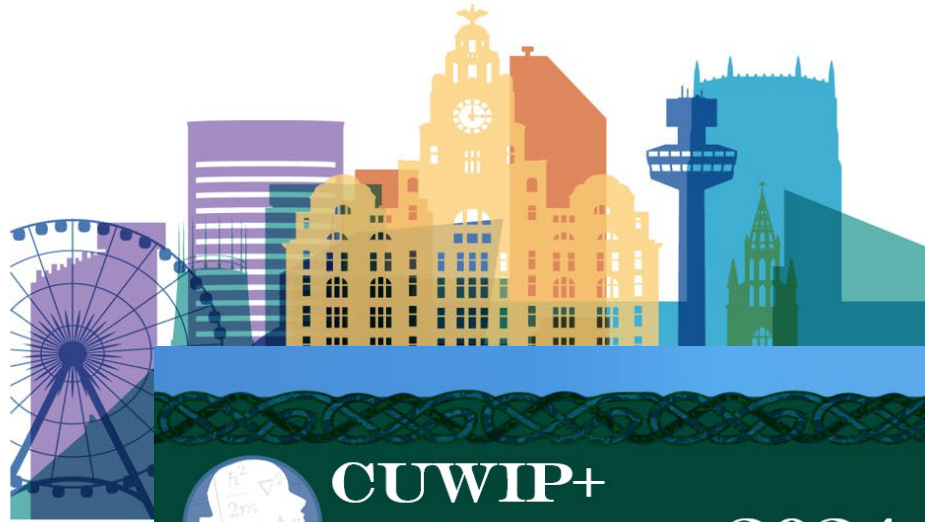
Project Juno is the IOP's flagship gender equality award for university physics departments and schools of physics, and other related organisations.



CONFERENCE FOR  
UNDERGRADUATE  
**WOMEN AND  
NON-BINARY  
PHYSICISTS**

23 – 26 MARCH 2023

L I V E R P O O L



CUWIP+

LIMERICK 2024

Conference for  
Undergraduate Women and  
Non-Binary Physicists

21-24  
March  
2024



## CUWiP+ 2025



We are excited to announce the 2025 Conference for Undergraduate Women and Non-binary Physicists will be hosted by the Department of Physics at the University of Warwick on the outskirts of Coventry.

## Sunday 6th April to Wednesday 9th April 2025

We are looking forward to hosting CUWiP 2025, with inspiring speakers, interactive workshops, tours of research facilities and networking opportunities.

The conference programme is in progress and will be shared ahead of applications opening at the end of October.

We will share more information about the conference over the coming months. If you have any queries, you can contact us at [cuwip2025@warwick.ac.uk](mailto:cuwip2025@warwick.ac.uk)

[Find out more about CUWiP.](#)

# Manchester and District Branch

## Volunteering – Hands on Science

Science  
Fields  
Blue Dot  
Festival  
Jodrell Bank



Festival of Science – Daresbury  
Laboratory

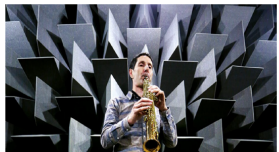


**IOP** Institute of Physics Manchester and District Branch  
**Promoting**

**A Celebration of Architectural Acoustic Aberrations**



**Prof Trevor Cox**  
Wednesday 14 June 2023  
18.00-19.00



**Bursts, bangs and things that go bump in the night**  
Prof Jocelyn Bell Burnell DBE  
Wednesday 13 April 2022  
14.30-15.30

**Physics of the Marvel Universe**  
Prof Martin Hendry  
Wednesday 13 December 2023  
18.30- 19.30

Our **MARVEL** ious Universe

**A Journey in Physics**  
Dr Jessica Boland  
Tuesday 7 March 2023  
18.30-19.30

**The Volcanic History of the Moon**  
Dr Marissa Lo  
Wednesday 8 November 2023  
18.30- 19.30

**Manchester Lit & Phil** **IOP**  
Institute of Physics

**Demystifying Antarctica: What have we learned and what comes next?**

A talk by glaciologist Professor Helen Fricker of the University of California

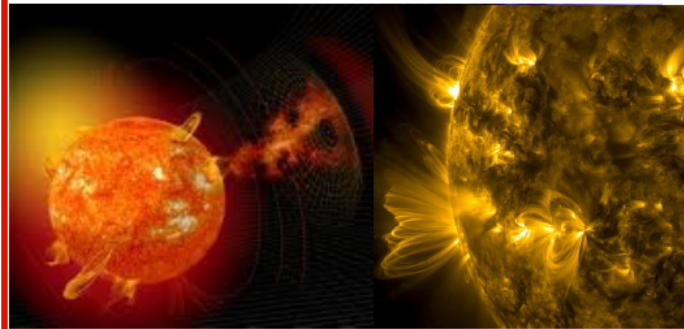


# Solar Flares

The most powerful explosions in the solar systems

Prof Philippa Browning

Wednesday 16 October 2024 18.30—19.30



Solar flares are powerful “explosions” in the atmosphere of the Sun, resulting from a release of stored magnetic energy. They can have significant effects on the Earth and our space environment. This talk will explain what we have learnt from recent space missions about how flares work.

We are pleased to say this will be a face-to-face talk but **please note the venue**. Refreshments are available prior to the talk and all are welcome. Parking is available to audience members.

Register at:  <https://www.iop.org/events/solar-flares>

Venue: Ball Lecture Theatre, Loreto 6th Form College, Chichester Road S, Manchester, M15 5PB

**IOP**  
Institute of Physics

For further information email  
[manchesteranddistrict@physics.org](mailto:manchesteranddistrict@physics.org)

## Careers with physics

Wherever you are in your journey with physics, we have resources to help you. Whether you're making subject choices at school or college, a physicist considering professional registration as your career progresses or an IOP member looking for CPD support, you can find information and advice here.



### Editor's choice



### PLANETARY SCIENCE | RESEARCH UPDATE

#### To make Mars warmer, just add nanorods

Releasing engineered nanoparticles into the Martian atmosphere could warm the planet by over 30 K

### CAREERS | FEATURE

#### Taking the leap – how to prepare for your future in the quantum workforce

**Katherine Skipper** and **Tushna Commissariat** interview three experts in the quantum arena, to get their advice on careers in the quantum market

### DIVERSITY AND INCLUSION | NEWS

#### Researchers with a large network of unique collaborators have longer careers, finds study

Female scientists tend to work in more tightly connected groups than men, which can negatively impact their careers

## IOP membership

- Undergraduate students can become members for just £15 a year.
- Postgraduate students can become members for just £35 a year.



IOP membership provides access to a wealth of resources, activities and events to support your career development and allow you to further your interest in physics.

Discover more about **our members** and how membership can support you to:

- broaden your physics knowledge
- connect to the community
- get ahead in your career with a professional registration

<https://membership.iop.org/become-a-member>